

2012-06

1.

1.1

2021 2

2012-06

2012-06

85752.98 m²71297.85 m²14455.13 m² 2018 10

R

1.2

85752.98 m²71297.85 m²14455.13 m²85752.98 m²

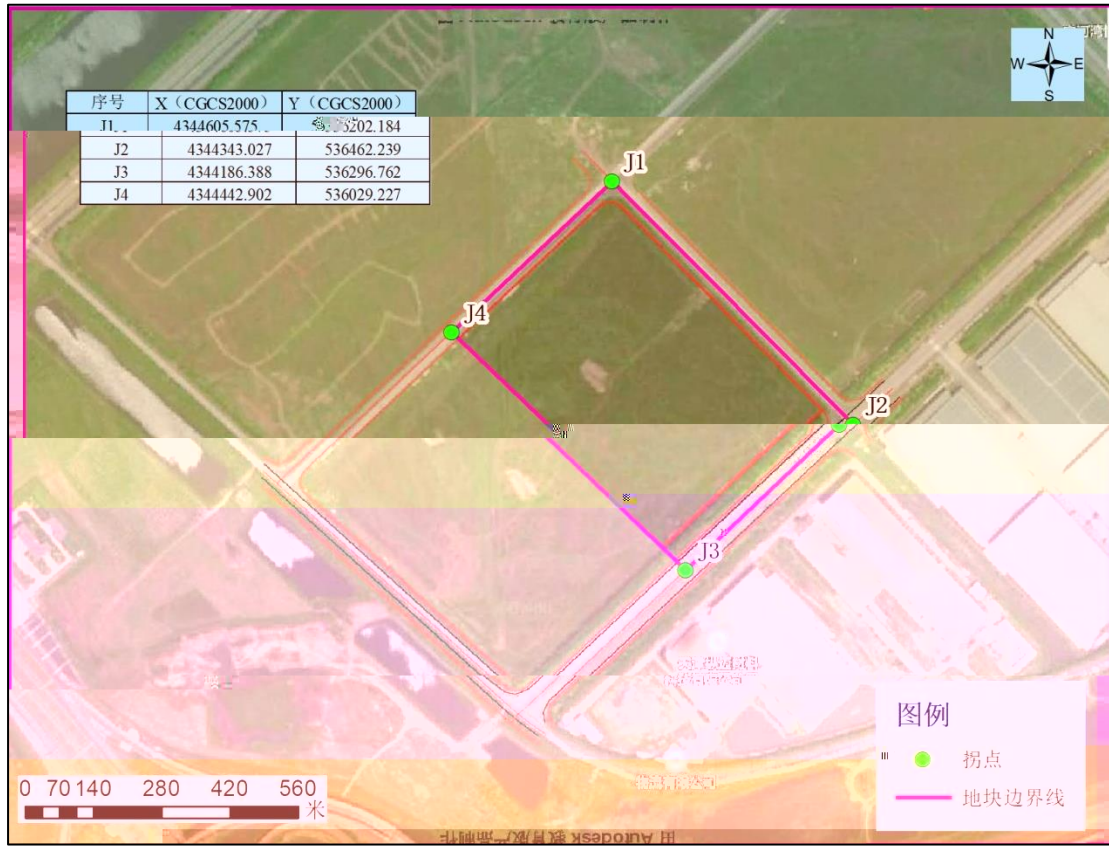
1.2-1

2000

1.2-1

1.2-1

	X CGCS2000	Y CGCS2000
J1	4344605.575	536202.184
J2	4344343.027	536462.239
J3	4344186.388	536296.762
J4	4344442.902	536029.227



1.2- 1

2.

2.1

2.1.1

2012

2012

2.1.2

2012

Google earth

2012

2012 11

2012

2018

R

2.2

2.2.1

15 m

15 m

2012-08

85765.51 m²

30 m

2.2.2

2011 2011

2011 15 m 2011

2.3 800 m EOD 800 m

2.4 800 m

2.5 800 m 2 500 m

1959

35 km 80 m 284.7 km²

4 m 4 27.5 km

1.82

2.6

2012

2012 11

2012

2018

R

-0.300 ~ 0.462 m

0.162 m

0.6

4.

4.1

4.1.1

1

HJ 25.1-2019

HJ 25.2-2019

<

>

2017 72 2017 12 14

2

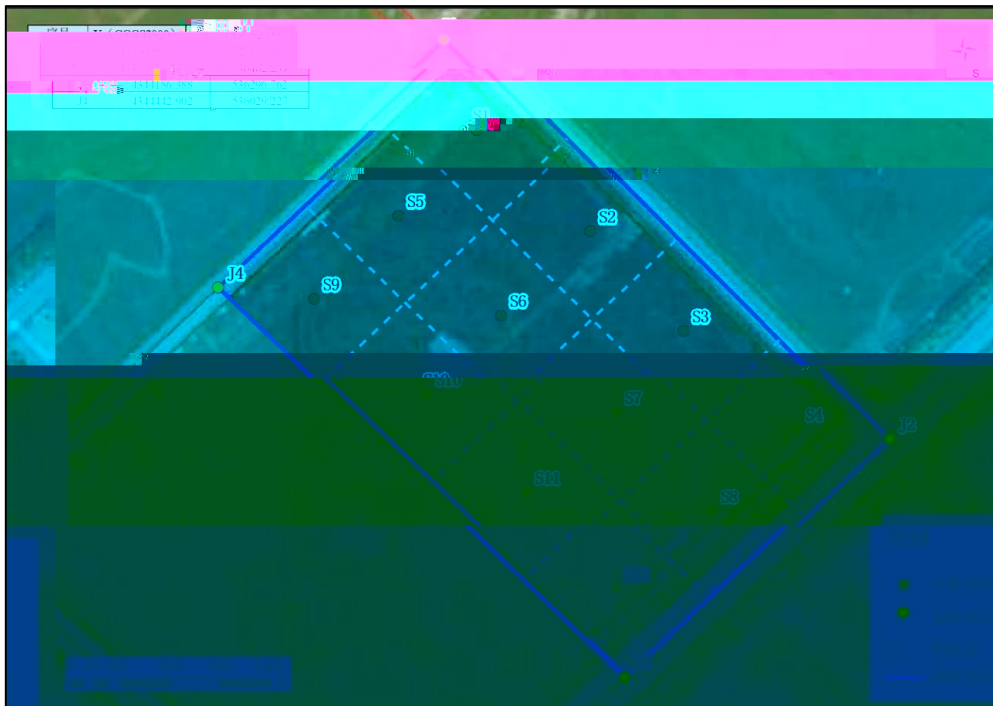
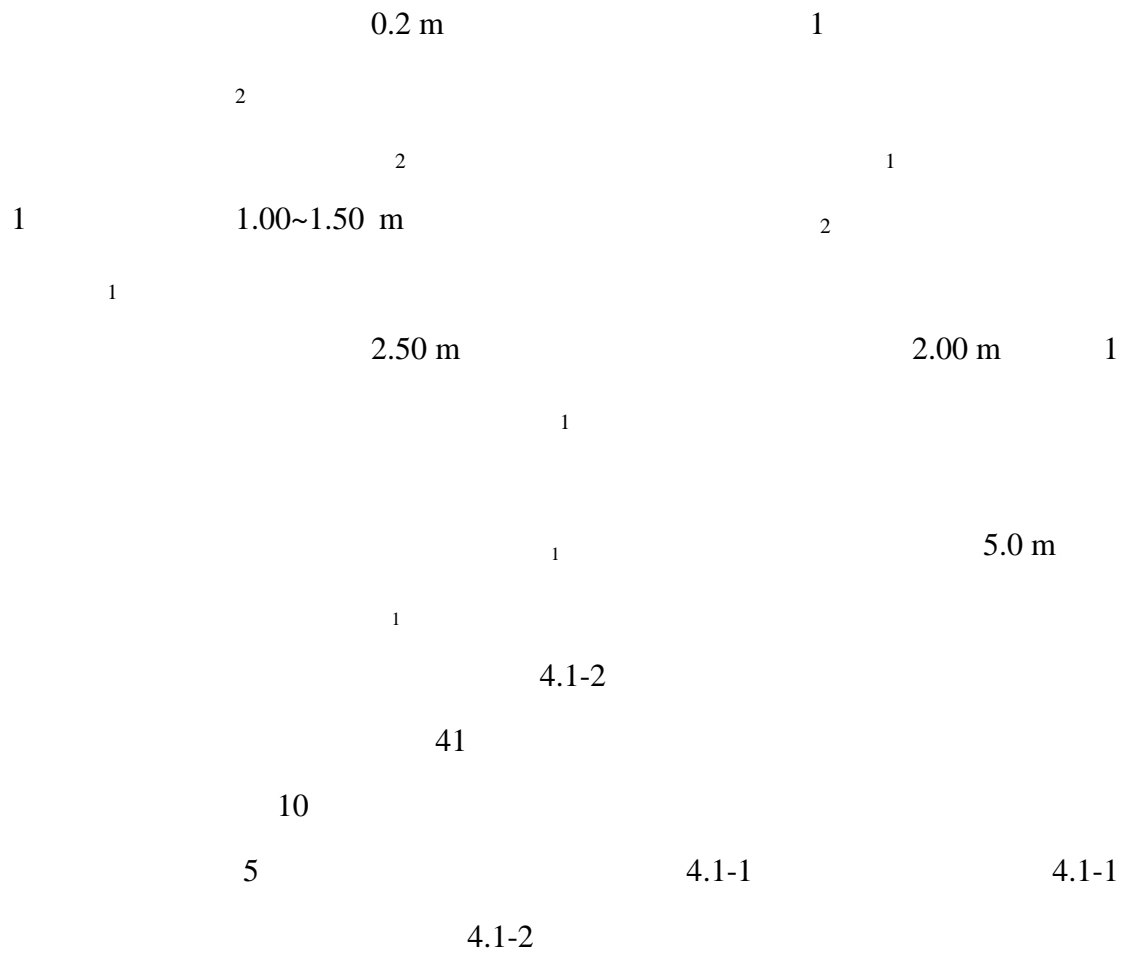
85752.98 m²

71297.85 m²

14455.13 m²

R

±0TM Zññ4' ñ k?± OE j



4.1- 1



4.1-2

4.1.2

S9 S12 S3 W1 W2 W3

4.1- 3

4.2

4.2.1

1

41

7

2

4.2-1

4.2- 1

		mg/kg	mg/kg	mg/kg			%
3		0.22	0.07	0.12	41	41	100
4		55	23	37.71	41	41	100
5		30.3	16.6	23.96	41	41	100
6		0.0701	0.0121	0.03	41	41	100
7		31	10	21.02	41	41	100
8		<0.5	<0.5	/	41	0	0

4.2-1

100%

0%

pH

8.60~9.51

2

C₁₀-C₄₀

41

C₁₀-C₄₀

4.2-2

4.2- 2

C₁₀-C₄₀

	mg/kg	mg/kg	mg/kg			%
C ₁₀ -C ₄₀	30	11	19.10	41	41	100

4.2-2

C₁₀₀.#Y5.000

4.2- 3

		mg/L	mg/L	mg/L			%
1	pH	7.86	7.75	/	3	3	100
2		0.00285	0.00164	0.002433	3	3	100
3		0.0024	0.0019	0.0021	3	3	100
4		0.00047	<0.00009	/	3	2	66
5		<0.00005	<0.00005	/	3	0	0
6		<0.00004	<0.00004	/	3	0	0
7		<0.004	<0.004	/	3	0	0
8		<0.04	<0.04	/	3	0	0

4.2-3

7

100%

66%

4

pH

7.75~7.86

2

C₁₀-C₄₀

3

C₁₀~C₄₀

C₁₀~C₄₀

3

VOCs

27 VOCs

VOCs

4

SVOCs

11 SVOCs

SVOCs

5

14

4.2

12

3

5.0 m

0.2-5.0 m

5.0 m

0.5 m

41

3

pH

C₁₀-C₄₀

	1		100%
0%	pH	8.60~9.51	
	2	C ₁₀ -C ₄₀	100%
	30 mg/kg	11 mg/kg	
	3	VOCs SVOCs	
	1	7	100%
66%	4		pH
7.75~7.86			
	2	C ₁₀ ~C ₄₀	
	3	VOCs SVOCs	

5.

5.1

1

1

GB36600-2018

2

DB11/T811-2011

2

800 m

1

GB/T 14848-2017

2

C₁₀-C₄₀

2020 4

5.2

1

2

3

5.3

C₁₀-C₄₀ VOCs SVOCs

GB36600-2018

VOCs SVOCs

GB/T 14848-2017

C₁₀-C₄₀