



**2019-42**

**2020 5**

1

1.1

2019-42

39242.4m<sup>2</sup>

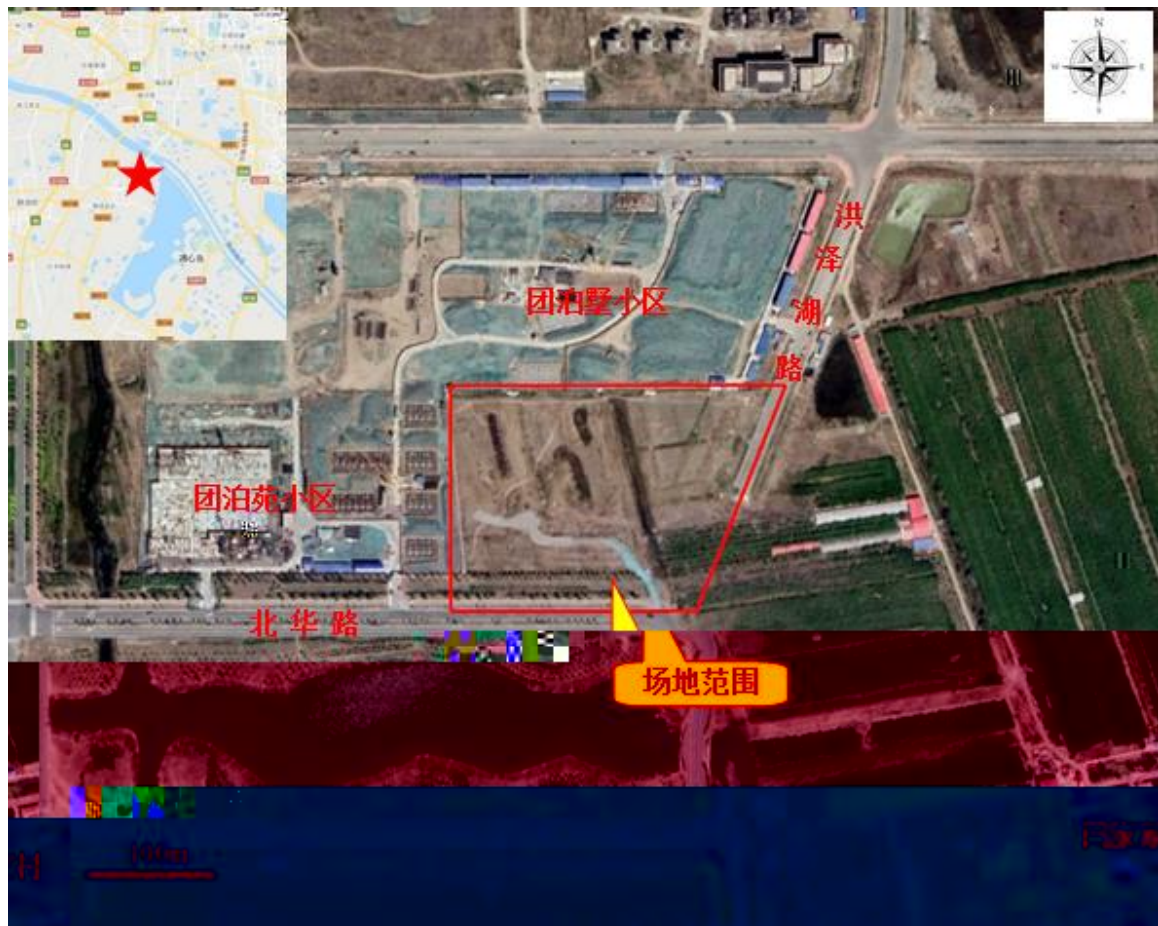
29036.3m<sup>2</sup>

10206.1m<sup>2</sup>

1.1-1

1.1

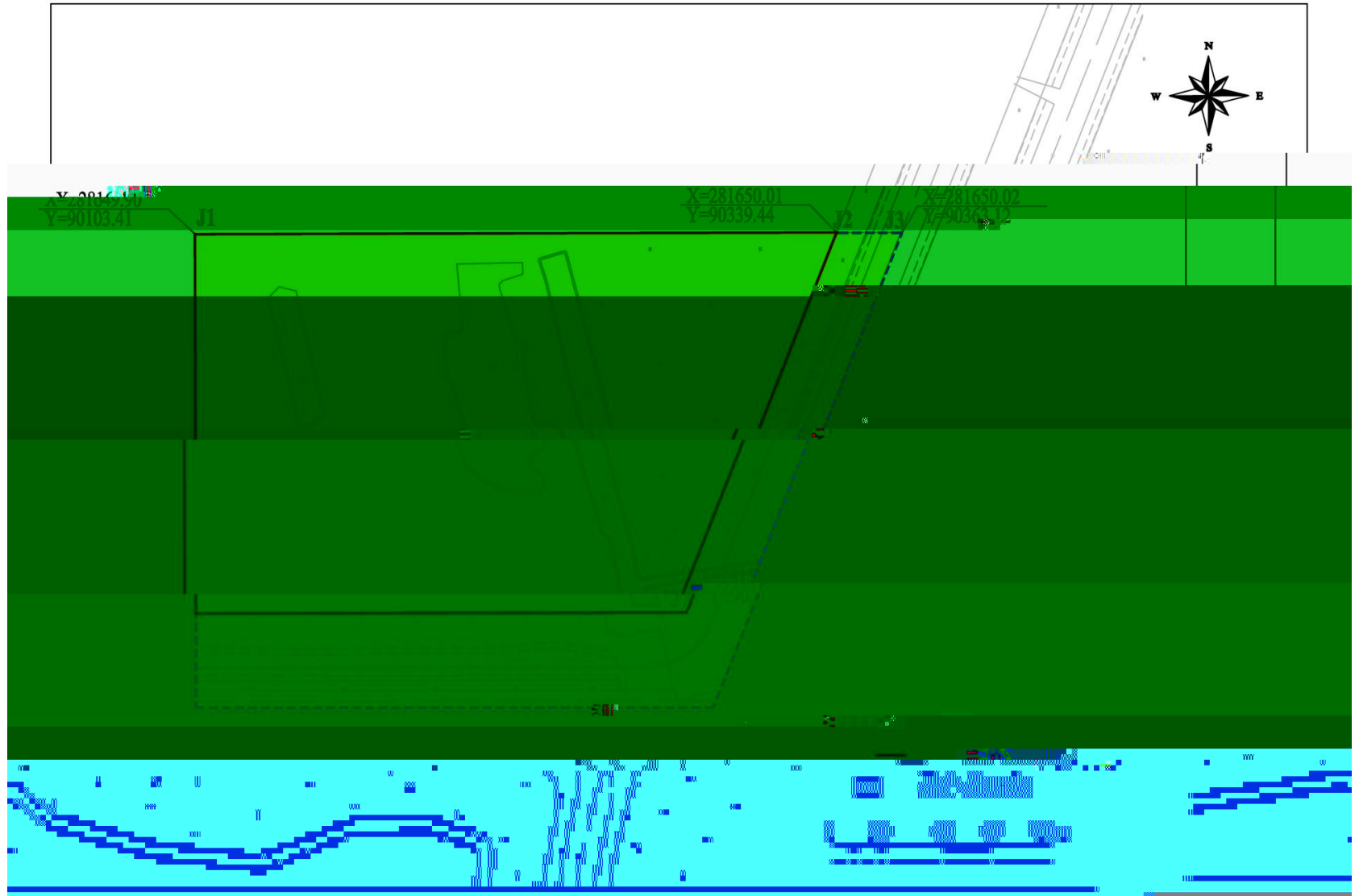
1.1-2



1.1-1

1.1

	X m	Y m		X m	Y m
J1	281649.90	90103.41	J4	281475.53	90293.69
J2	281650.01	90339.44	J5	281475.53	90103.41
J3	281650.02	90363.12	J6	281510.53	90103.41
J7	291510.53	90283.94			



1.1-2

## 1.2

0.3~0.5m  
130m 10m  
2011  
2013 2015  
2015 2  
2013~2015

## 1.3

2  
0.5~1.5m  
1  
2968m<sup>2</sup>

## 1.4

1.5

2013 2010 150m  
2011 2013~2015  
2018  
2013 2014  
2018  
2013 2010  
150m 2011  
2015  
2013 2013~2014  
2013 2018

2

1

As Cr Hg Cd

1985 2003 DDT  
1985~2003

As Cr Hg Cd

2

As Cr Hg Cd

As Cr Hg Cd

500m

Pb Hg

Pb Hg

a

2010

150m

50m 600m

pH Cu

2018

3

Qml ( )

Q<sub>4</sub><sup>3</sup>al 1 Q<sub>4</sub><sup>3</sup>al

1.15 1.60m Q<sub>4</sub><sup>2</sup>m 3

11.40~12.25m

Q<sub>4</sub><sup>1</sup>h ( )

1.151~1.595m

-0.045~0.358m

Cl SO<sub>4</sub> Na pH 7.12~7.36

4654.50~7160.71mg/L Cl SO<sub>4</sub> Na Mg ~ pH

7.56~8.16 6354.46~13395.57mg/L

4

10 4 3 4

42 5 4 1

3 1 4 1

GB36600-2018

45





